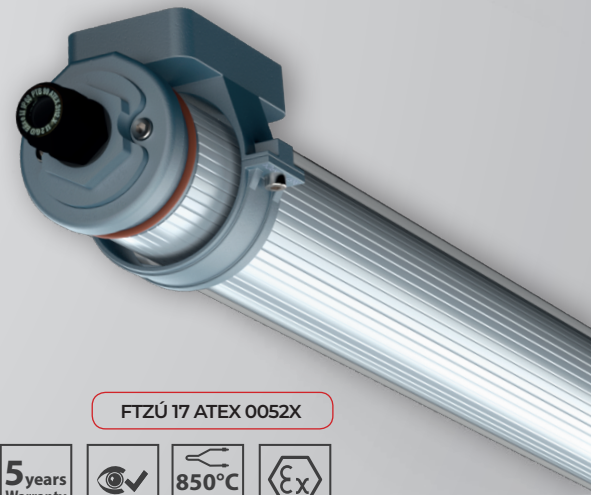




# AQUA-70-Ex-LED

IP 66 / IP 68 / zone 1, 21

IK10 (5kg@40cm)



FTZÚ 17 ATEX 0052X



**Application:** Dustproof and water-tight lighting fixture AQUA-70-Ex-LED is designed for lighting of areas with danger of explosion. The lighting fixture is certified by FTZU Ostrava-Radvanice (certificate type FTZU 17 ATEX 0052X).

**Ballast:** EP – electronic 110-254 V, 50-60 Hz AC, 220-250 V, 0 Hz DC

**Light source:** LED, 4000K, CRI +80

**Housing:** Tube with outer diameter of 70 mm and wall thickness of 4 mm made from clear PC - IK10 (polycarbonate)

**Fastening:** Surface wall or ceiling mounting by means of plastic or stainless steel mounting brackets (not standard equipment) or suspension by means of cable suspenders

**Standard equipment:** 1pc EX plastic cable gland M20x1,5 for diameter of cable 7-13mm, 1pc EX plastic sealing plug

**Calculated lifetime – LED modules:**

L80B50 ta50 – 45 000h

### AQUA-70-Ex-LED-D

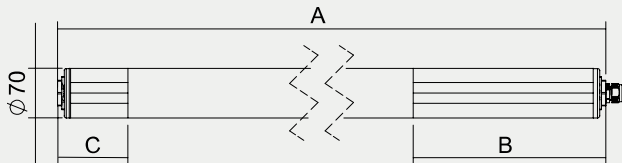
⊗ II 2G Ex db eb mb op is IIC T4 Gb

⊗ II 2D Ex tb op is IIIC T62°C Db

### AQUA-70-Ex-LED-WOD

⊗ II 2G Ex eb mb op is IIC T4 Gb

⊗ II 2D Ex tb op is IIIC T62°C Db

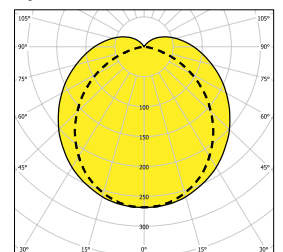


Order number	Name	Lighting fixture luminous flux (lm)	Power input (W)	Rated power output	Ta max (°C)	Equivalent*	Dimensions of lighting fixture A x B x C (mm)	Weight (kg)
084240	AQUA-70-Ex-LED-D-2750-118-4K	2107	16	132	50	X	1149x425x65	2,9
084200	AQUA-70-Ex-LED-D-4000-118-4K	3061	28	109	50	1x36W	1149x425x65	2,9
084241	AQUA-70-Ex-LED-D-5500-136-4K	4175	30	139	50	1x58W	1709x425x65	4,7
084201	AQUA-70-Ex-LED-D-8000-136-4K	5985	51	117	50	X	1709x425x65	4,7
084242	AQUA-70-Ex-LED-WOD-2750-118-4K	2107	16	132	50	X	1149x425x65	2,9
084202	AQUA-70-Ex-LED-WOD-4000-118-4K	3061	28	109	50	1x36W	1149x425x65	2,9
084243	AQUA-70-Ex-LED-WOD-5500-136-4K	4175	30	139	50	1x58W	1709x425x65	4,7
084203	AQUA-70-Ex-LED-WOD-8000-136-4K	5985	51	117	50	X	1709x425x65	4,7

Tolerance of luminous flux and power input of the lighting fixture +/- 10%

\* Luminaires are not a direct replacement. They may vary in length. The required lighting of the room must be verified by calculation.

AQUA-70-Ex-LED

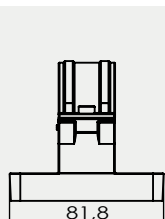


SAFE answers to HAZARDOUS questions

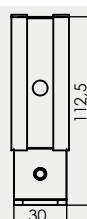
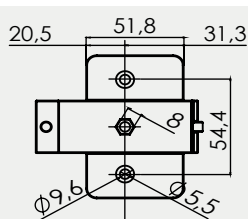
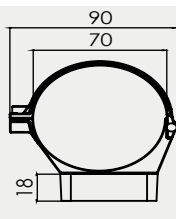
## Accessories on request

	008096 Plastic cable gland Ex M20x1.5 008097 Plastic nut WISKA EMUG 20 M20x1.5 008090 Sealing plug Ex M20x1.5 007047N Flat sealing ring EPDM 26x20x1.5 mm		<b>Direct mounting</b> 064898 Stainless steel mounting bracket AQUA-70 (1 pc) for direct surface mounting
	<b>Direct mounting</b> 053627 Stainless steel mounting bracket AQUA-70 (1 pc)		<b>Direct mounting</b> 053629 Mounting PC bracket AQUA-70, dark grey (1pc) <b>Suspended mounting</b> 051127 Cable suspension AQUA-70 (2 pcs) 053629 Mounting PC bracket AQUA-70, dark grey (1pc)
	<b>Direct mounting</b> 053628 Stainless steel mounting bracket AQUA-70 (1 pc) <b>Suspended mounting</b> 051134 Cable suspension AQUA-70 (2 pcs) stainless steel 053628 Stainless steel mounting bracket AQUA-70 (1 pc)		<b>Direct mounting</b> 053630 Mounting PC bracket AQUA-70, bright grey (1pc) <b>Suspended mounting</b> 051127 Cable suspension AQUA-70 (2 pcs) 053630 Mounting PC bracket AQUA-70, bright grey (1pc)

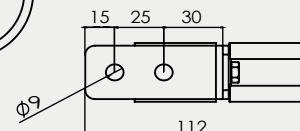
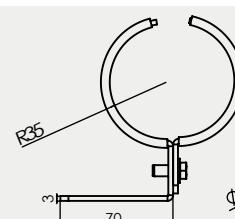
## Lighting fixture detail



053630



053627



## Marking system and overview of approved variants of lighting fixtures

AQUA-70-Ex-LED-D-XXXX-YYY	lighting fixture type for standard operation with disconnecter
AQUA-70-Ex-LED-WOD-XXXX-YYY	lighting fixture type for standard operation without disconnecter
XXXX*	indicates value of luminous flux (lumen) 4000/8000
YYY*	indicates type of lighting fixture housing 118/136

## On request

**3000/4000/6000K** - colour temperature

**1/3 F** - single-phase or three phase through wiring connection, max. diameter of wires 4 mm<sup>2</sup>

Stadard order number	EM-1H	EM-3H	MULTI-1H	MULTI-3H	DALI	1F	3F
084200	X	X	X	X	X	084200 1F	X
084201	X	X	X	X	X	084201 1F	X
084202	X	X	X	X	X	084202 1F	X
084203	X	X	X	X	X	084203 1F	X

### Use of lighting fixtures in areas with danger of explosion

Danger of explosion of flammable dust

Danger of explosion of flammable gases and vapours

### Marking of external influences

BE3N1

BE3N2

### Marking

ZONE 21.22

ZONE 1.2

### Area classification

#### Directive

ČSN EN 60079-14, ČSN EN 60079-10-2

ČSN EN 60079-14, ČSN EN 60079-10-1

## STL International Ltd

Hill Farm, Linton Hill, Maidstone, Kent, ME17 4AL, UK T. +44 (0)1622 749633 eMail. solutions@stl-int.co.uk Web. www.stl-int.co.uk