



BOXER-LED

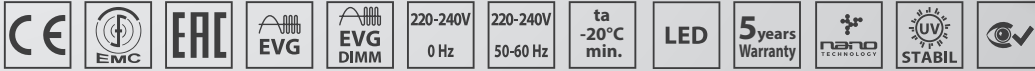
IP 65

5 year warranty

ANTI-LIGATURE



IK10+ 40J
IK10+ 50J(FC)



Application: Antivandal lighting fixture BOXER-LED with dust and splash water resistance is designed for areas with high risk of damage, i.e. prison cells, psychiatric hospitals, gyms and pedestrian subways.

Ballast: EP – electronic 220-240 V/50-60 Hz AC, 220-240 V

Light source: LED, 4000K, CRI +80, MacAdam3

Housing: White painted steel sheet RAL 9003

Diffuser: Polycarbonate in combination with painted steel frame RAL9003

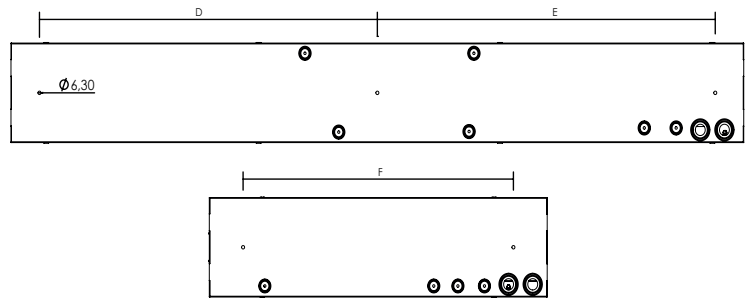
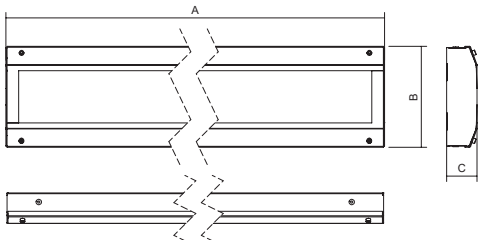
Reflector: Highly polished aluminium sheet

Fastening: Surface wall or ceiling mounting, recessed via frame for recessed installation or corner mounted via set for corner installation

Connection: Screwless three-pole terminal block, maximum diameter of wires 2.5 mm². The lighting fixture is prepared for loop-in (possibility of connection of two cables)

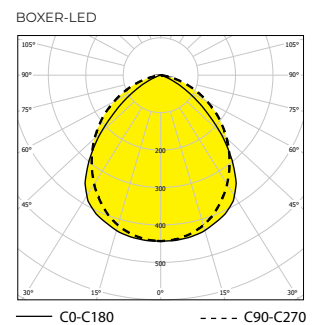
Standard equipment: 2 pcs cable gland, washers with rubber to seal mounting holes, safety screws (it is necessary to order additionally 004778 - Bit for safety screw with socket head and pin s=3)

Calculated lifetime – LED modules: L80B10 ta30 – 70 000h
L70B10 ta30 – 100 000h



Order number	Name	Lighting fixture luminous flux (lm)	Power input (W)	Rated power output (lm/W)	Ta max (°C)	Dimensions of lighting fixture A x B x C (mm)	Mounting spacing Dx E/F (mm)	Weight (kg)
053495	BOXER-LED-1450-4K	1123	8	140	55	421x184x56	320	2,8
053489	BOXER-LED-1650-4K	1413	11	128	55	421x184x56	320	2,8
053494	BOXER-LED-2900-4K	2393	18	133	60	701x184x56	540	4,7
053491	BOXER-LED-3300-4K	2826	22	128	60	701x184x56	540	4,7
053497	BOXER-LED-5800-4K	4786	36	133	55	1257x184x56	550x550	7
053487	BOXER-LED-6600-4K	5368	41	131	55	1257x184x56	550x550	7
053499	BOXER-LED-7200-4K	6350	48	132	45	1519x184x56	680x680	9
053485	BOXER-LED-8200-4K	6710	51	132	45	1519x184x56	680x680	9

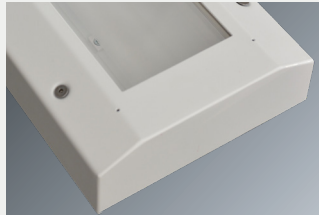
Tolerance of luminous flux and power input of the lighting fixture +/- 10%



Order number	Name	Lighting fixture luminous flux (lm)	Power input (W)	Rated power output (lm/W)	Ta max (°C)	Dimensions of lighting fixture A x B x C (mm)	Mounting spacing Dx E/F (mm)	Weight (kg)
053495 FC	BOXER-LED-FC-1450-4K	1123	8	140	55	426x186x56	320	3
053489 FC	BOXER-LED-FC-1650-4K	1413	11	128	55	426x186x56	320	3
053494 FC	BOXER-LED-FC-2900-4K	2393	18	133	60	706x186x56	540	5
053491 FC	BOXER-LED-FC-3300-4K	2826	22	128	60	706x186x56	540	5
053497 FC	BOXER-LED-FC-5800-4K	4786	36	133	55	1262x186x56	550x550	7,3
053487 FC	BOXER-LED-FC-6600-4K	5368	41	131	55	1262x186x56	550x550	7,3
053499 FC	BOXER-LED-FC-7200-4K	6350	48	132	45	1524x186x56	680x680	9,5
053485 FC	BOXER-LED-FC-8200-4K	6710	51	132	45	1524x186x56	680x680	9,5

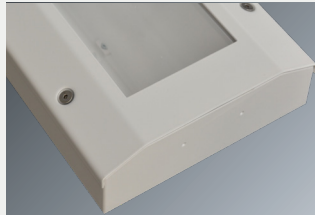
FC (full cover)

VYRTYCH antivandal luminaires with FC marking comply with ANTI LIGATURE or SUICIDE RESISTANT requirements for areas with high risk of damage like prison or a secure healthcare facility. There are generally no moving or protruding parts or rounded, bevelled corners also prevent points, where something can be attached. This means there are no ligature points or attachment areas that could enable a luminaire to be used for self-harming.



BOXER-LED-FC

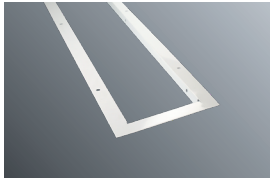
The luminaire of this type is equipped with a frame that completely covers the luminaire body. The impact resistance of this solution is 50J.



BOXER-LED

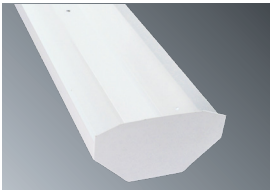
The luminaire of this type is equipped with a frame that covers the luminaire body by 10 mm. The impact resistance of this solution is 40J.

Accessories on request



053412	Recessed frame BOXER-LED 421
053413	Recessed frame BOXER-LED 701
053414	Recessed frame BOXER-LED 1257
053415	Recessed frame BOXER-LED 1519

The requirement to equip the luminaire with a soffit frame must be specified when ordering, or contact technical support. BOXER-LED-FC version cannot be equipped with a recessed frame.



053416	Set for corner installation BOXER-LED 421
053417	Set for corner installation BOXER-LED 701
053418	Set for corner installation BOXER-LED 1257
053419	Set for corner installation BOXER-LED 1519

BOXER-LED-FC version cannot be equipped with a corner mounting kit.

On request

Em – non-maintained emergency lighting (1h, 3h)

DIM – dimmable electronic ballast (DSI, DALI)

2.7K-6.5K – colour temperature

NEREZ - housing produced from stainless steel AISI 304 or AISI 316

(in case of STAINLESS STEEL version its declared for ambient temperature decreased about 5-10°C)

MW SENSOR - microwave sensor (in case of requirement for sensor, contact the technical support)

MULTI – maintained emergency lighting (1h, 3h)

RAL – other colour scale

NANO – lighting fixtures can be protected by special nano-layer (hydrophobic, oleophobic or antibacterial protection)

NIGHT LIGHT - equipped with 4-8W LED source for night-time lighting

SKLO – hardened safety glass

Standard order number	MULTI-1,5H	MULTI-3H	DALI	1F	3F
053495	053495 1H	053495 3H	053495 DALI	X	X
053489	053489 1H	053489 3H	053489 DALI	X	X
053494	053494 1H	053494 3H	053494 DALI	X	X
053491	053491 1H	053491 3H	053491 DALI	X	X
053497	053497 1H	053497 3H	053497 DALI	X	X
053487	053487 1H	053487 3H	053487 DALI	X	X
053499	053499 1H	053499 3H	053499 DALI	X	X
053485	053485 1H	053485 3H	053485 DALI	X	X

Standard order number	MULTI-1,5H	MULTI-3H	DALI	1F	3F
053495 FC	053495 FC 1H	053495 FC 3H	053495 FC DALI	X	X
053489 FC	053489 FC 1H	053489 FC 3H	053489 FC DALI	X	X
053494 FC	053494 FC 1H	053494 FC 3H	053494 FC DALI	X	X
053491 FC	053491 FC 1H	053491 FC 3H	053491 FC DALI	X	X
053497 FC	053497 FC 1H	053497 FC 3H	053497 FC DALI	X	X
053487 FC	053487 FC 1H	053487 FC 3H	053487 FC DALI	X	X
053499 FC	053499 FC 1H	053499 FC 3H	053499 FC DALI	X	X
053485 FC	053485 FC 1H	053485 FC 3H	053485 FC DALI	X	X

STL International Ltd

Hill Farm, Linton Hill, Maidstone, Kent, ME17 4AL, UK T. +44 (0)1622 749633 eMail. solutions@stl-int.co.uk Web. www.stl-int.co.uk