



# EXTRA RANGE

LINEAR LED LUMINAIRES

MOUNTING AND ACCESSORIES GUIDE

# Standard Supply



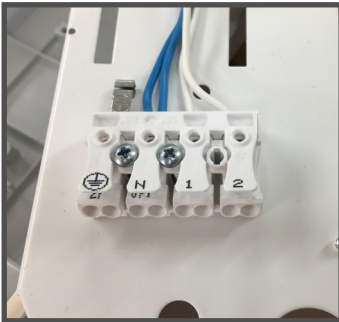
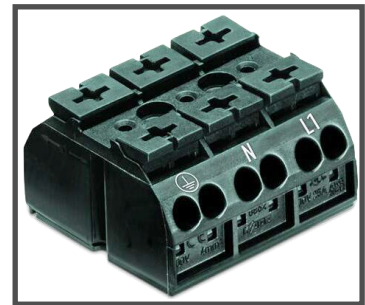
Stainless steel diffuser clips  
(Number supplied depends of the length of the fitting)



2 x stainless steel wall/ceiling mounting brackets

## Zone 1/21

1 x 3-pole, 4-pole or 5-pole  
4mm<sup>2</sup> screwless terminal block  
with loop in/loop out connection



## Zone 2/22 and Industrial

1 x 3-pole, 4-pole or 5-pole  
2.5mm<sup>2</sup> screwless terminal block  
with loop in/loop out connection



Gear tray retainers. These can also be used to suspend the gear tray during commissioning or maintenance

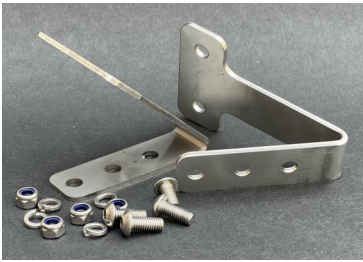


Each luminaire contains 1 x M20 Exe cable gland, 1 x M20 Exe stopping plug and 2 x EPDM washers. Additional entries can be drilled by the installer in the marked locations (hole saw recommended)



# Mounting Solutions

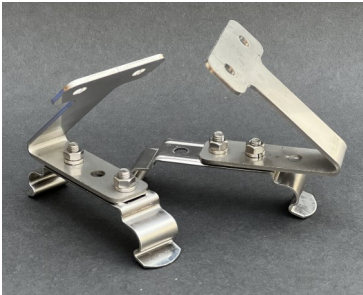
A range of dedicated mounting options are available to suit multiple applications.



## 45deg Angled Wall Mounting Bracket Kit

### EXTRA-BKT-45

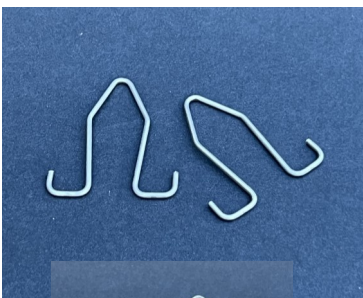
The EXTRA 45deg bracket is used in combination with the standard wall mounting bracket supplied with all fittings.



## Pole Mounting Bracket Kit (50mm)

### EXTRA-BKT-PM50

The EXTRA pole mounting bracket is used in combination with the standard wall mounting bracket supplied with all fittings. Other sizes are available on request.



## Suspension Kit

- EXTRA-BKT-WS** (Wire Suspension)
- SUS-WCZP3x16** (Welded Chain, cut, max.30m)
- SUS-WCZP3x16-10** (Welded Chain, 10m)
- SUS-WCZP3x16-30** (Welded Chain, 30m)
- SUS-QLZP3.5-10** (Quick Links, 10/bag)
- SUS-MLZP3.5-10** (Mending Links, 10/bag)

The EXTRA wire suspension is used in combination with the standard wall mounting bracket that is supplied with all fittings.

The zinc plated welded chain and accessory links, if required, are bought separately.



### Cable Suspension Bracket Kit

#### **EXTRA-BKT-CS**

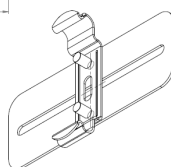
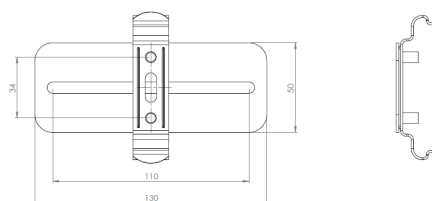
The EXTRA cable suspension kit is used in combination with the standard wall mounting bracket supplied with all fittings.



### Earth Continuity Plate

#### **EXTRA-ECP20**

The EXTRA earth continuity plate is supplied with 2 x M20 clearance holes. The 4mm<sup>2</sup> flying lead is connected to the metal gear tray. When used in Zone 2, Ex nR fittings, in combination with metal glands, replace the EPDM washers with nitrile rubber bonded seal washers (also known as Dowty washers).



### Adaptor Fixing Plate

#### **EXTRA-AFP**

The EXTRA mounting bracket can be fitted with an adaptor plate to suit existing mounting holes.

(other dimensions can be manufactured to suit the application)



4 mm<sup>2</sup> terminal block

**EXTRA-T4sqmm**

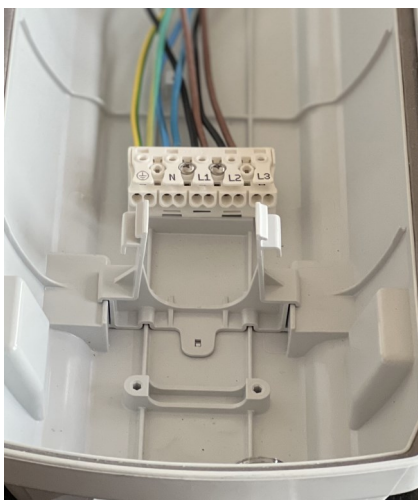
The EXTRA zone 2/22 range can be fitted with 4mm<sup>2</sup> terminal blocks, either replacing the existing terminal block on the gear tray or with the through wiring option.



Magnetic Mount Kit

**EXTRA-BKT-MAG**

The EXTRA rubber coated magnetic mount kit screws onto the standard wall mounting bracket supplied with all fittings. The 20kg pull force securely attaches the luminaires to any flat magnetic surface.



Through wiring (factory fitted)

**EXTRA-1F** (3x1.5mm<sup>2</sup>)

**EXTRA-2F** (4x1.5mm<sup>2</sup>)

**EXTRA-3F** (5x1.5mm<sup>2</sup>)

The EXTRA range can be supplied with through wiring in either a single phase (1F) or a three phase (3F) configuration.

When using standard luminaires and emergency fittings in the same circuit, the standard lights can be supplied with 4-pole terminals to allow through wiring of the permanent live.



Colour Coated Diffuser

**EXTRA-\*FT-GREEN**

**EXTRA-\*FT-RED**

The EXTRA range can be supplied with colour coated diffusers. The GREEN diffuser is typically used where safety shower units are located.

\* = 2, 4 or 5 denoting the length of the fitting

---



Large Suspension Hooks

**EXTRA-BKT-LSH**

The EXTRA fittings can be suspended using hooks when putting up lighting temporarily during maintenance.



TORX Safety Screws

**EXTRA-TSC-Kit**

The EXTRA range can be supplied with TORX safety screws to prevent unauthorised access. The kit includes 10 screws and a T10 screw driver bit.

---



Plug and Socket

**EXTRA-PSZ2**

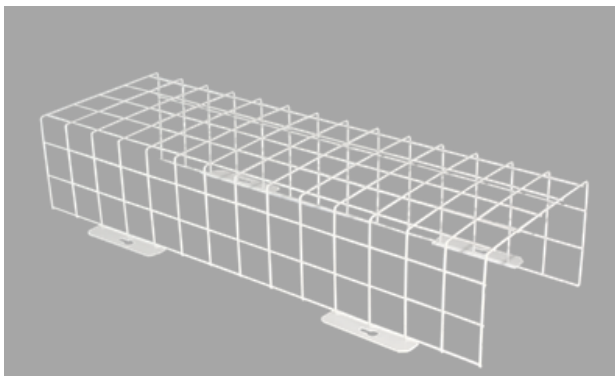
The EXTRA range can be fitted with Zone 2 plug and sockets to facilitate temporary lighting solutions.



Additional entries

The base is supplied with a 20mm clearance entry at either end. The existing holes can be enlarged to 25mm or additional 20 or 25mm entries can be drilled by the installer in the marked locations.

For a clean cut, the use of a hole saw is recommended.



Protective Cage

**EXTRA-\*FT-PC**

The EXTRA fittings have an impact resistance of IK10/20J. This is the same as a 1kg weight dropping onto the light from a 2m height. However, if the application requires it, a cage can be supplied for added protection.

\* = 2, 4 or 5 denoting the length of the fitting

# STL INTERNATIONAL LTD

Hill Farm, Linton Hill  
Maidstone, ME17 4AL  
United Kingdom

tel. +44 (0)1622 749633

eMail. [solutions@stl-int.co.uk](mailto:solutions@stl-int.co.uk)

