



RAMBO-Ex-LED

IP 66 / IP 67 / Ex zone 1, 21



FTZÚ 17 ATEX 0053X



Application: Antivandal lighting fixture RAMBO-Ex-LED with splash water resistance designed for lighting of areas with danger of explosion. The lighting fixture is certified by FTZU Ostrava-Radvanice (certificate type FTZU 17 ATEX 0053X).

Ballast: EP – electronic 110-254 V, 50-60 Hz AC, 220-250 V, 0 Hz DC

Light source: LED, 4000K, CRI +80

Housing: White painted steel sheet (RAL 9003) with plastic sides with end caps from polycarbonate.

Diffuser: Tube with outer diameter of 70 mm and wall thickness of 4 mm made from clear PC - IK10 (polycarbonate)

Fastening: Direct surface wall or ceiling mounting by means of screws

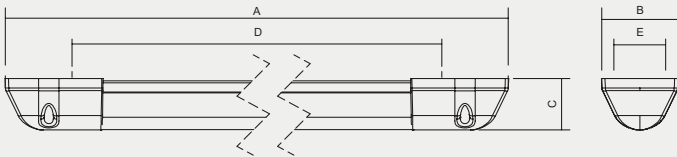
Connection: Screwless three-pole terminal block, maximum diameter of wires 4 mm²

Standard equipment: 1pc EX plastic cable gland M20x1,5 for diameter of cable 7-13mm, 1pc EX plastic sealing plug

Calculated lifetime – LED modules:

L80B50 ta50 – 40 000h

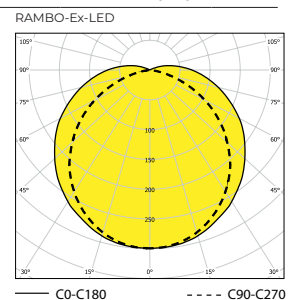
RAMBO-Ex-LED-D	RAMBO-Ex-LED-WOD
Ⓜ II 2G Ex db eb mb op is IIC T4 Gb	Ⓜ II 2G Ex eb mb op is IIC T4 Gb
Ⓜ II 2D Ex tb op is IIIC T59°C Db	Ⓜ II 2D Ex tb op is IIIC T59°C Db



Order number	Name	Lighting fixture luminous flux (lm)	Power input (W)	Rated power output (lm/W)	Ta max (°C)	Equivalent*	Dimensions of lighting fixture A x B x C (mm)	Mounting spacing Dx E (mm)	Weight (kg)
084250	RAMBO-Ex-LED-D-2750-118-4K	1953	16	122	50	1x36W	1318x113x76	1148x60 (Ø8)	7,6
084210	RAMBO-Ex-LED-D-4000-118-4K	2835	28	101	50	X	1318x113x76	1148x60 (Ø8)	7,6
084251	RAMBO-Ex-LED-D-5500-136-4K	3794	30	126	45	X	1878x113x76	1708x60 (Ø8)	11
084211	RAMBO-Ex-LED-D-8000-136-4K	5441	51	107	45	X	1878x113x76	1708x60 (Ø8)	11
084252	RAMBO-Ex-LED-WOD-2750-118-4K	1953	16	122	50	1x36W	1318x113x76	1148x60 (Ø8)	7,6
084212	RAMBO-Ex-LED-WOD-4000-118-4K	2835	28	101	50	X	1318x113x76	1148x60 (Ø8)	7,6
084253	RAMBO-Ex-LED-WOD-5500-136-4K	3794	30	126	45	X	1878x113x76	1708x60 (Ø8)	11
084213	RAMBO-Ex-LED-WOD-8000-136-4K	5441	51	107	45	X	1878x113x76	1708x60 (Ø8)	11

Tolerance of luminous flux and power input of the lighting fixture +/- 10%

* Luminaires are not a direct replacement. They may vary in length. The required lighting of the room must be verified by calculation.



Accessories on request



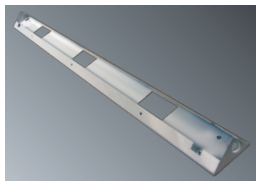
008096	Plastic cable gland Ex M20x1.5
008097	Plastic nut WISKA EMUG 20 M20x1.5
008090	Sealing plug Ex M20x1.5
007047N	Flat sealing ring EPDM 26x20x1.5 mm



002020	Rambo special key
--------	-------------------



004569	RAMBO safety screw 6x10
--------	-------------------------

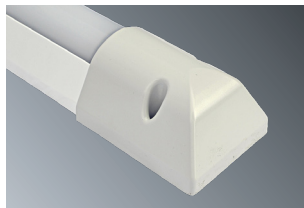


order number on request	Corner bracket 30°
-------------------------	--------------------

Marking system and overview of approved variants of lighting fixtures

RAMBO-Ex-LED-D-XXXX-YYY	lighting fixture type for standard operation with disconnecter
RAMBO-Ex-LED-WOD-XXXX-YYY	lighting fixture type for standard operation without disconnecter
XXXX*	indicates value of luminous flux (lumen) 4000/8000
YYY*	indicates type of lighting fixture housing 118/136

Lighting fixture detail



On request

3000/4000/6000K- colour temperature

1/3 F - single-phase or three phase through wiring connection, max. diameter of wires 4 mm2

RAL – other colour scale

NEREZ – body from stainless steel AISI 304 or AISI 316

(in case of STAINLESS STEEL version its declared for ambient temperature decreased about 5-10°C)

Stadard order number	EM-1,5H	EM-3H	MULTI-1,5H	MULTI-3H	DALI	1F	3F
084210	X	X	X	X	X	084210 1F	X
084211	X	X	X	X	X	084211 1F	X
084212	X	X	X	X	X	084212 1F	X
084213	X	X	X	X	X	084213 1F	X

Use of lighting fixtures in areas with danger of explosion

Marking of external influences

Area classification

		Marking	Directive
Danger of explosion of flammable dust	BE3N1	ZONE 21.22	ČSN EN 60079-14, ČSN EN 60079-10-2
Danger of explosion of flammable gases and vapours	BE3N2	ZONE 1.2	ČSN EN 60079-14, ČSN EN 60079-10-1

STL International Ltd

Hill Farm, Linton Hill, Maidstone, Kent, ME17 4AL, UK T. +44 (0)1622 749633 eMail. solutions@stl-int.co.uk Web. www.stl-int.co.uk