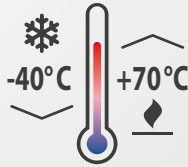


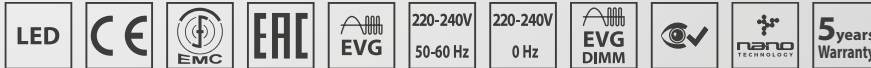


SALUKA-LED-PLUS/FROST

IP 66



5 year warranty



Application: Metal dustproof lighting fixture SALUKA-LED-PLUS/FROST with splash water resistance designed for workshops, garages, industrial and production areas with higher ambient temperature, or warehouses and freezers with low temperature.

Ballast: EP – electronic 220-240 V/50-60 Hz AC, 220-240 V DC

Light source: LED, 4000K, CRI +80, MacAdam3

Housing: White painted steel sheet RAL 9003

Diffuser: Clear hardened safety glass
OP - matt hardened safety glass

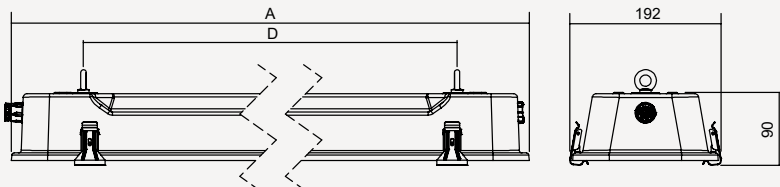
Reflector: White painted steel sheet RAL 9003

Fastening: Direct surface wall or ceiling mounting, ceiling mounting by means of ceiling brackets or adjustable brackets, wall mounting by means of wall arm brackets, pole mounting by means of pole brackets, suspension via set of suspension hooks (standard equipment)

Connection: Screwless three-pole terminal block, maximum diameter of wires 2.5 mm²

Standard equipment: 1 pc M20 cable gland for diameter of cable 7-12 mm, 1 pc M20 sealing plug, 2 pcs suspending hook, 2 pcs rubber gasket

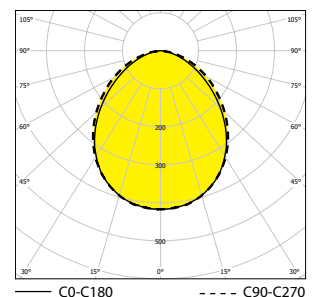
Calculated lifetime – LED modules: L80B10 ta40 – 75 000h
L70B10 ta40 – 110 000h



Order number	Name	Lighting fixture luminous flux (lm)	Power input (W)	Rated power output (lm/W)	Ta max (°C)	Dimensions of lighting fixture A x B x C (mm)	Mounting spacing D (mm)	Weight (kg)
variant PLUS								
053019	SALUKA-LED-PLUS-OP-2500-118-4K	2245	17	132	65	705x192x90	510	3,8
053020	SALUKA-LED-PLUS-OP-5000-218-4K	4223	33	128	60	705x192x90	510	3,9
053021	SALUKA-LED-PLUS-OP-2500-136-4K	2245	17	132	65	1305x192x90	1110	7,1
053022	SALUKA-LED-PLUS-OP-5000-236-4K	4223	33	128	60	1305x192x90	1110	7
053023	SALUKA-LED-PLUS-OP-3500-158-4K	3140	25	126	60	1605x192x90	1410	8,1
053024	SALUKA-LED-PLUS-OP-7500-258-4K	6625	47	141	65	1605x192x90	1410	8,3
053025	SALUKA-LED-PLUS-OP-9600-258-4K	7876	57	138	65	1605x192x90	1410	8,3
053017	SALUKA-LED-PLUS70-OP-5000-236-4K	4270	28	153	70	1305x192x90	1110	7
053018	SALUKA-LED-PLUS70-OP-7500-258-4K	6669	43	155	70	1605x192x90	1410	8,3
variant FROST								
054492	SALUKA-LED-FROST-OP-5000-136-4K	4382	28	157	-40	1305x192x90	1110	7,1
054493	SALUKA-LED-FROST-OP-10000-236-4K	8245	56	147	-40	1305x192x90	1110	7
054494	SALUKA-LED-FROST-OP-4750-158-4K	4255	26	164	-40	1605x192x90	1410	8,1
054495	SALUKA-LED-FROST-OP-7500-258-4K	6830	43	159	-40	1605x192x90	1410	8,3
054496	SALUKA-LED-FROST-OP-12500-258-4K	10348	69	150	-40	1605x192x90	1410	8,3

Tolerance of luminous flux and power input of the lighting fixture +/- 10%

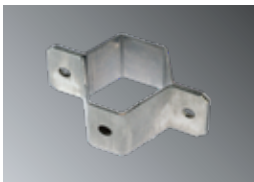
SALUKA-LED-PLUS/FROST-OP



Accessories on request

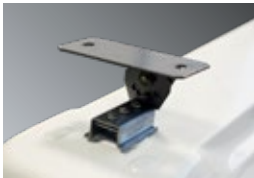


051139 Set of ceiling brackets SALUKA (2 pcs)



051145 Pole bracket SALUKA stainless steel (for Ø 50 mm)

064018 Pole bracket SALUKA stainless steel (for Ø 40 mm)



063754 Set of adjustable brackets SALUKA (2 pcs)



051147 Stainless steel wall arm bracket SALUKA 60° (1 pc)

Lighting fixture detail



On request

2.7K-6.5K - colour temperature

GESIS – possibility to equip lighting fixtures with connectors

NEREZ - housing produced from stainless steel AISI 304 or AISI 316 (in case of STAINLESS STEEL version its declared for ambient temperature decreased about 5-10°C)

DIM – dimmable electronic ballast (DALI)

1/3 F - single-phase or three phase through wiring connection, maximum diameter of wires 1.5 mm²

NANO - lighting fixtures can be protected by special nano-layer (hydrophobic, oleophobic or antibacterial protection)

Standard order number	EM-1H	EM-3H	MULTI-1H	MULTI-3H	DALI	1F	3F
variant PLUS							
053019	X	X	X	X	X	053019 1F	053019 3F
053020	X	X	X	X	X	053020 1F	053020 3F
053021	X	X	X	X	X	053021 1F	053021 3F
053022	X	X	X	X	X	053022 1F	053022 3F
053023	X	X	X	X	X	053023 1F	053023 3F
053024	X	X	X	X	X	053024 1F	053024 3F
053025	X	X	X	X	X	053025 1F	053025 3F
variant FROST							
054492	X	X	X	X	X	054492 1F	054492 3F
054493	X	X	X	X	X	054493 1F	054493 3F
054494	X	X	X	X	X	054494 1F	054494 3F
054495	X	X	X	X	X	054495 1F	054495 3F
054496	X	X	X	X	X	054496 1F	054496 3F